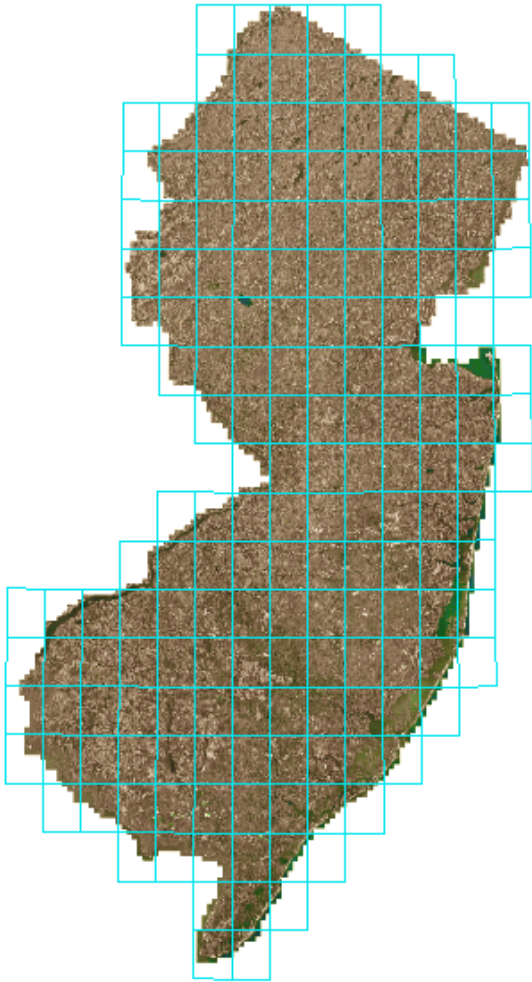


# New Jersey 2012 Orthophotography

Boyd Ostroff, updated 2/28/2018



Aerial imagery for the entire state of New Jersey at a resolution of 6 feet per pixel, filmed during the period 2012-2013 at a nominal altitude of 9600 feet.

This imagery was captured during the winter when the trees were bare, revealing features that would be covered by forest canopy during the warmer months.

The original 2012 orthophotography has a resolution of one foot per pixel (level 19) but this map is offered at 6 feet per pixel (level 16) to keep the download to a reasonable size.

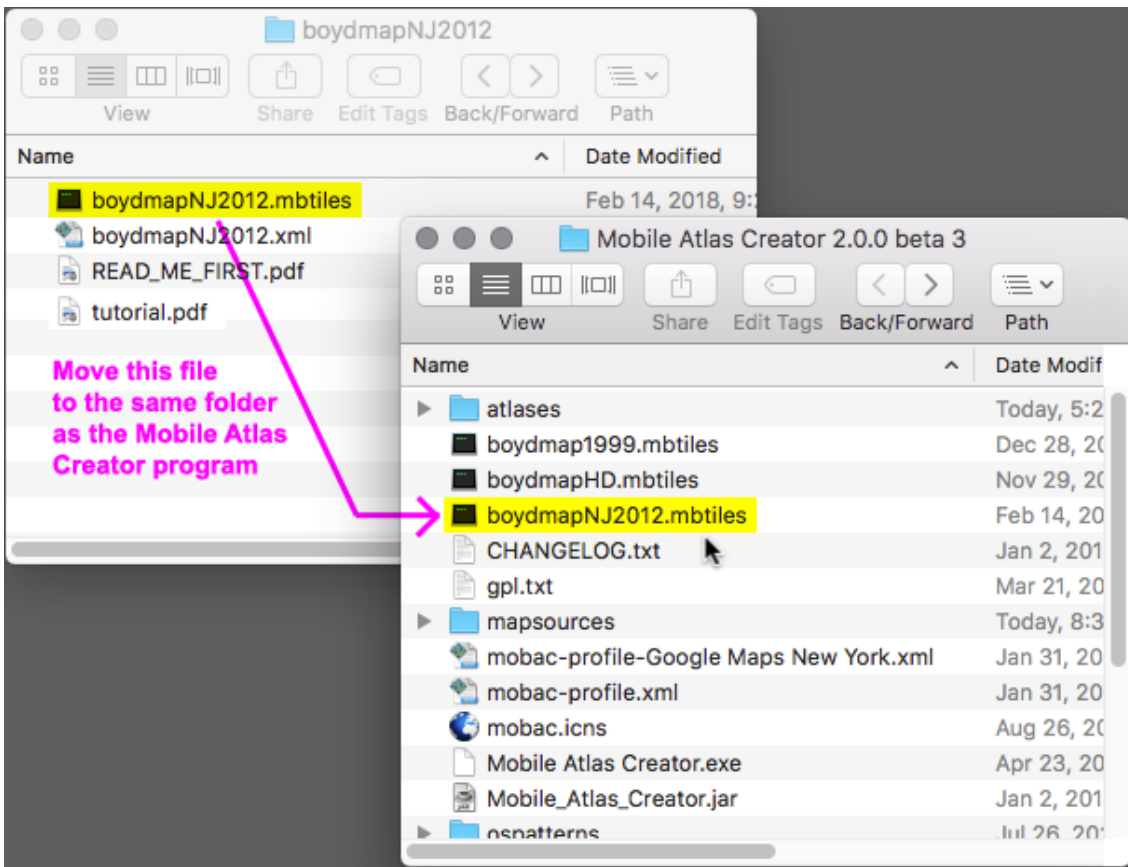
A 3 foot per pixel (level 17) map would be about 28 gigabytes, and the full one foot per pixel imagery (level 19) would be over 400 gigabytes!

## Map Installation

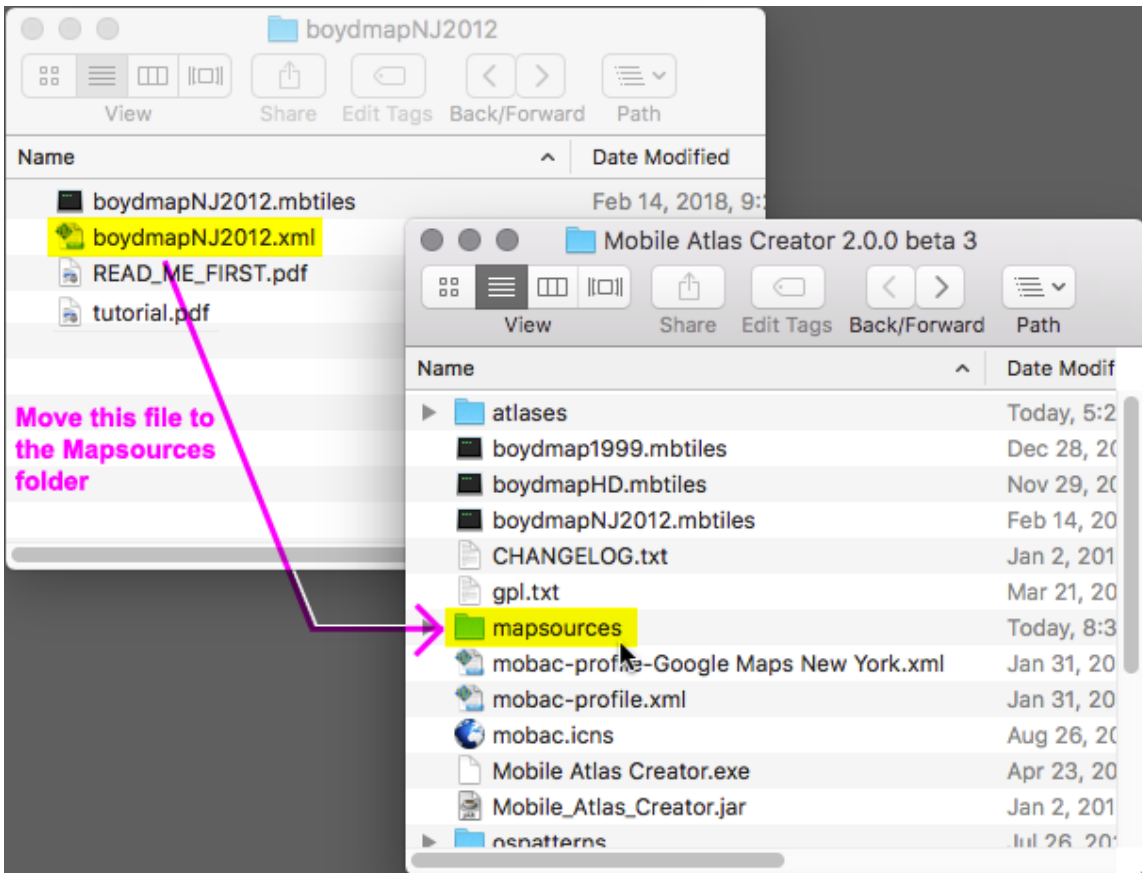
***Before installing the map, please read the license agreement at the end of this document.***

This map requires **Mobile Atlas Creator** (MOBAC) on your computer. If you have not yet installed **MOBAC**, you must install it before proceeding. The included file **tutorial.pdf** includes detailed instructions. After installing **MOBAC** you may proceed with map installation, which is very simple and only involves moving two files.

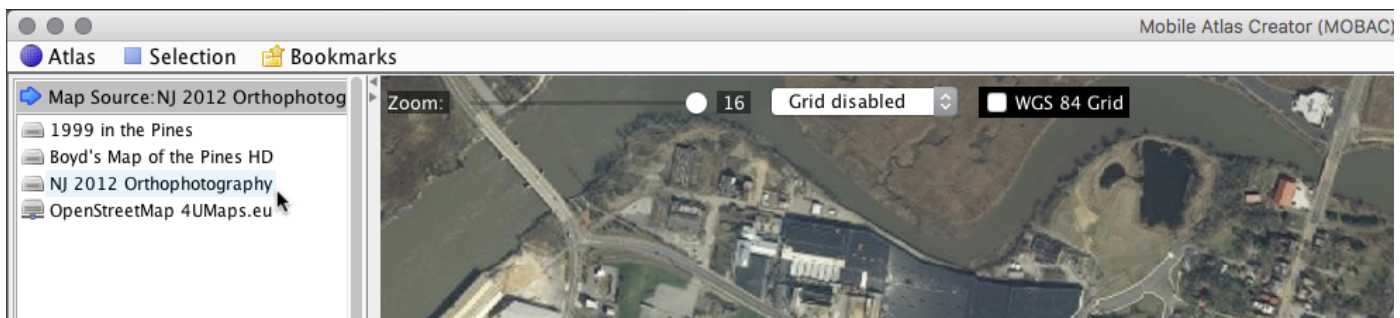
First, move the file named **boydmapNJ2012.mbtiles** to the **Mobile Atlas Creator** folder



Then move the file named **boydmapNJ2012.xml** to the **mapsources** folder



Start **Mobile Atlas Creator** and you should be able to choose **NJ 2012 Orthophotography** from the Mapsource list.



See the **tutorial.pdf** file that is included in this distribution for help with **Mobile Atlas Creator**. It includes step-by-step instructions for installing the map on smartphones, handheld GPS units and computers.

## Resources

Download the map: <https://boydsmaps.com/new-jersey-2012-orthophotography/>

Read or download the latest version of the **Mobile Atlas Creator** tutorial:

<https://boydsmaps.com/docs/Using-Mobile-Atlas-Creator-with-Boyd-Maps.pdf>

Visit <https://boydsmaps.com> for more maps

## Data Source

**New Jersey 2012-2013 High Resolution Orthophotography**, NJ Office of Information Technology (NJOIT) and Office of Geographic Information Systems (OGIS)

[https://njgin.state.nj.us/NJ\\_NJGINExplorer/IW.jsp?DLayer=NJ%202012%20High%20Resolution%20Orthophotography](https://njgin.state.nj.us/NJ_NJGINExplorer/IW.jsp?DLayer=NJ%202012%20High%20Resolution%20Orthophotography)

## **New Jersey 2012 Orthophotography License Agreement**

There are no usage restrictions for the **New Jersey 2012 Orthophotography ("the map")**. But credit to boydsmaps.com would be appreciated, and the data provider has requested acknowledgement of the "NJ Office of Information Technology (NJOIT), Office of Geographic Information Systems (OGIS)" as the original source.

**Map software is provided 'as-is', without any express or implied warranty.** In no event will the author be held liable for any damages arising from the installation or use of this software. No representations are made as to the accuracy of **the map**. The user assumes all risks associated with installation and use of this software. **The map** is intended for reference, educational and recreational purposes only. The author will not be held responsible for any inaccuracies and no responsibility is assumed for damages or other liabilities due to errors, installation, accuracy, availability, use or misuse of the data presented.

The **New Jersey Office of Information Technology** has made the following statement about the 2012 Orthophotography:

***"Users should be aware that temporal changes may have occurred since this data set was collected and that some parts of this data may no longer represent actual surface conditions. Users should not use this data for critical applications without a full awareness of it's limitations."***